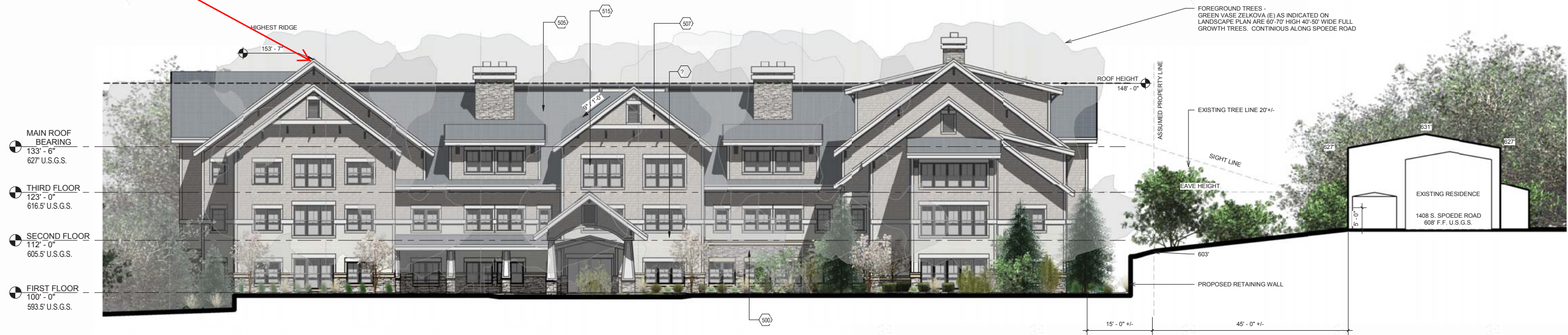


56.5' Height



1 CONCEPT ELEVATION WEST  
3/32" = 1'-0"



2 CONCEPT ELEVATION SOUTH  
3/32" = 1'-0"

KEYNOTE LEGEND	
KEY VALUE	KEYNOTE TEXT
500	REAL STONE VENEER
505	CEDAR SHAKES
506	PRE-FINISHED CEDAR LAP SIDING
507	PRE-FINISHED SHAKE SIDING
515	CLAD WINDOWS



The Grove in Frontenac

OPTION 1 ROOF PITCH 9:12

Frontenac, Missouri

12.09.2014

Lantz - Boggio Architects, P.C.

PRELIMINARY - NOT FOR CONSTRUCTION





December 9, 2014

Frontenac: Assisted Living Amenities

***Amenities List***

- Larger Apartments than currently offered in other communities
- Emergency Call System
- Resident Storage Areas
- Kitchenette & Bath to include granite or marble finishes
- Gourmet Café available throughout the day
- Fine Dining Restaurant with outdoor patio seating surrounded by gardens
- Private Dining Room
- Indoor Garden Room
- Arts Studio
- Wellness Center to include Spa Salon & Barber Shop, Rehabilitative Gym, etc.
- Library & Cyber Cafe
- Outdoor gardens, walking paths, courtyard
- Lounges
- Mail Room
- Guest Parking
- Complimentary WiFi
- Smoke Free Environment
- Pet Friendly
- Individually Controlled Heat & Air Conditioning



December 9, 2014

Frontenac: Assisted Living Amenities



Café available all day

December 9, 2014

Frontenac: Assisted Living Amenities



Fine Dining Restaurant



December 9, 2014

Frontenac: Assisted Living Amenities



Outdoor seating area