

March 9, 2022

Tree Assessment – Geyer Road Improvements (East side)

Background and Scope: The City of Frontenac is planning updates to Geyer Road south of Clayton Road that include sidewalk installation and storm water improvements. Prior consideration was given for work along the west side of Geyer Road and report provided dated October 29, 2021. The subject area for this report contains landscape trees that may be impacted by the proposed work on the east side of Geyer Road and detailed in engineered drawings by Lochmueller Group and dated 2-14-2022. The City has requested information about the location, species, size, and condition of trees in the subject area on the west side of Geyer Road. While there are multiple scenarios of work being discussed (sidewalk location, extent of stormwater work, power pole relocations), this report provides a preliminary assessment of trees to the extent requested by the City.

Documents: This report includes the following documents.

- **Tree Map A** - An engineered map prepared by Lochmueller Group with approximate tree locations added by Hansen based on a site visit that took place with city staff on March 9, 2022.
- **Tree Data Table** – A list of trees in the subject area along the east side of Geyer Road that would be impacted by new sidewalk and wire relocation. The list contains the following data:
 - Tree Number
 - Species – Common Name
 - Condition Rating (Excellent, Good, Fair, Poor, Critical, Dead)
 - DBH – Trunk diameter at 4.5 feet above ground
 - Distance from existing curb – in feet
 - Sidewalk impacts on the tree (X indicates yes)
 - Overhead wire relocation impacts on the tree (X indicates yes)
 - Tree Comments

Findings: Individual subject trees on the east side of Geyer in the subject area were numbered and assessed and included in the documents identified above. A total of 37 trees were assessed along the east side. Additionally, there are areas of heavy honeysuckle growth that provides screening from the road for adjacent homes. There are 6 trees within the estimated work zone that would be affected by sidewalk construction activities. And, there are 33 trees that would be impacted by additional pruning or removal needed to accommodate relocation of wires. Of those 33 trees affected by relocation of wires, there are 8 that may need to be removed. One tree was recorded that is in critical condition and urgently needs to be removed regardless of any proposed plans.

As a review, the preliminary findings from the October 29, 2021 report indicated the following:

A preliminary assessment of trees along the east side of Geyer indicates very few trees that would be impacted by sidewalk construction. However, there are several areas of honeysuckle and other invasive shrubbery that would be affected. This vegetation provides screening,

albeit from an exotic and invasive plant species. Accommodations for pruning or removing this vegetation will be required.

There are some areas along the eastern route where removal of the honeysuckle will greatly exaggerate views of larger trees (white pines, etc) that have been pruned for utility clearance in the past. The shrubby vegetation provides a bit of a visual buffer to the upper canopies of these pine trees. While fewer trees may be impacted along the eastern route, consideration should be given to potential impacts to this lower vegetation and the resulting views and future maintenance of any replacement plants that may be considered.

The information provided in October, 2021 is still valid. Current information about the relocation of power lines increases the impact to 33 trees needing increased pruning or removal.

Respectfully submitted,



Skip Kincaid
Director of Urban Forestry
ISA Board Certified Master Arborist MW-0155BM
ISA Tree Risk Assessment Qualified
SAF Certified Forester #1516
TCIA – Certified Tree Care Safety Professional (CTSP)
TCIA – Crew Leader Certified

TREE DATA - Geyer Road East 2022 03-09

| TREE | Common Name | Condition | DBH | Feet from XST Curb | Sdwlk Impact | Wire Impact | Tree Comments |
|------|--------------------|-----------|------|--------------------|--------------|-------------|---|
| A | honeysuckle | fair-poor | | | X | X | prune or remove |
| 1 | pear callery | fair | 14 | 12 | X | | minor prune in canopy |
| 2 | sweetgum | fair | 38 | 12 | | X | may need 8" limb rmvd @ 40' |
| 3 | pine eastern white | poor | 22 | 14 | | X | RMV |
| B | honeysuckle | fair-poor | | | | X | prune or remove |
| 4 | pine eastern white | poor | 14 | 16 | | X | RMV |
| 5 | pine eastern white | poor | 18 | 21 | | X | RMV |
| 6 | pine eastern white | poor | 18 | 21 | | X | RMV |
| 7 | honeylocust | poor | 20 | 25 | | X | prune or remove (decay at base) |
| 8 | honeylocust | fair | 22 | 25 | | X | prune |
| 9 | oak pin | fair | 40 | 30 | | X | prune |
| C | honeysuckle | fair-poor | | | | X | prune or remove |
| 10 | birch river | fair | 18MS | 25 | | X | prune |
| 11 | pine Austrian | critical | 12 | 12 | | X | RMV |
| 12 | pine eastern white | fair-poor | 36 | 16 | | X | lean away from road - prune |
| 13 | pine eastern white | fair-poor | 24 | 15 | | X | prune |
| 14 | redbud | fair | 6 | 15 | | X | prune |
| 15 | boxelder | poor | 40 | 12 | | X | prune |
| 16 | redbud | fair | 8 | 15 | X | | prune |
| 17 | holly | fair | 6 | 15 | X | | prune |
| 18 | spruce Norway | fair | 16 | 15 | X | X | prune |
| 19 | maple silver | fair | 18 | 25 | | X | prune |
| 20 | maple silver | fair | 10 | 25 | | X | prune |
| 21 | maple silver | fair | 15 | 25 | | X | prune |
| 22 | spruce Norway | fair | 24 | 20 | | X | prune |
| 23 | spruce Norway | fair | 20 | 20 | | X | prune |
| 24 | oak pin | fair | 28 | 35 | | | prune |
| 25 | spruce Colorado | poor | 14 | 20 | | | prune |
| 26 | birch river | fair | 16 | 25 | | | prune |
| 27 | oak pin | poor-fair | 28 | 25 | | X | prune |
| 28 | holly | fair | 8 | 20 | | X | prune |
| 29 | holly | fair | 12 | 25 | | X | prune |
| 30 | sweetgum | fair | 27 | 20 | | X | prune |
| 31 | oak pin | fair | 25 | 20 | | X | prune or remove |
| 32 | oak pin | fair | 30 | 25 | | X | prune |
| 33 | maple silver | poor | 26 | 25 | | X | prune |
| 34 | spruce Norway | good | 10 | 20 | | X | prune |
| 35 | spruce Norway | fair | 12 | 16 | | X | prune |
| 36 | oak shingle | critical | 36 | 12 | | | High Risk tree. Major trnk decay / crack |
| 37 | oak shingle | poor | 40 | 10 | X | X | prune |

37 trees assessed total (plus honeysuckle buffers)

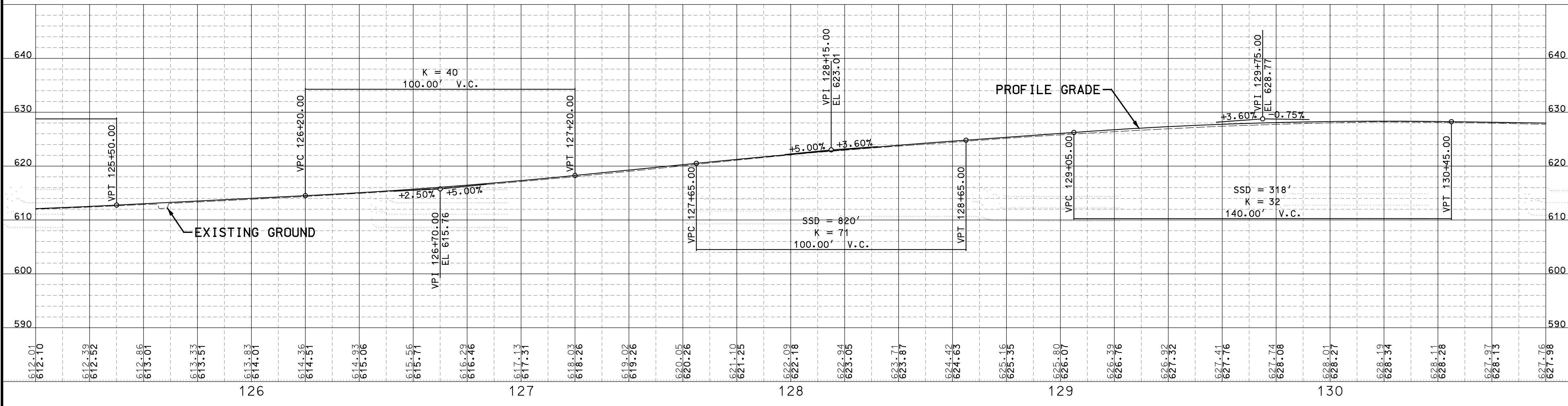
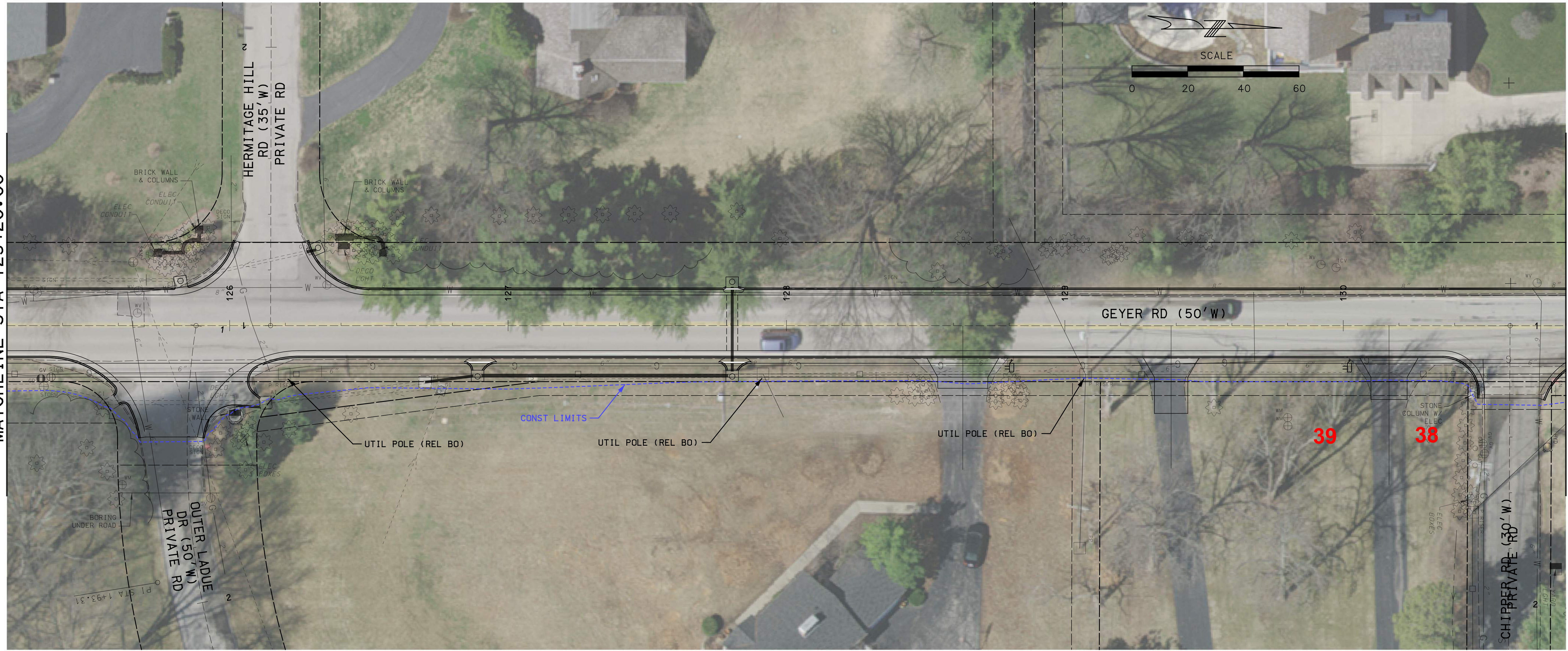
6 trees impacted by proposed sidewalk

1 tree suggested for removal regardless of project needs

33 trees impacted by proposed wires

MATCHLINE STA 125+20.00

MATCHLINE STA 130+80.00



PRELIMINARY PLANS

NOT FOR CONSTRUCTION

DATE

DISCLAIMER OF RESPONSIBILITY

I hereby specify that the documents intended to be authorized by my seal are limited to this sheet, and I hereby disclaim any responsibility for all other Drawings, Specifications, Estimates, Reports or other documents or instruments relating to or intended to be used for any part of the engineering project or survey.

| REV | DATE | BY | DESCRIPTION |
|-----|------|----|-------------|
| | | | |
| | | | |
| | | | |
| | | | |

LOCHMUELLER GROUP
 411 N 10TH STREET, SUITE 200
 SAINT LOUIS, MISSOURI 63101
 P (314) 621-3395 F (314) 621-3288
 WWW.LOCHGROUP.COM
 MISSOURI STATE ENGINEERING CORPORATION
 CERTIFICATE/LICENSE NO. 2002011852

GEYER ROAD PHASE 2 IMPROVEMENTS
PLAN AND PROFILE
SHEET 2 OF 10

PROJECT/JOB NO.
STP-5503(608)

MSD PROJECT NO.
 -

MSD BASE MAP
20N, 21N, 22N

DATE PREPARED
2/14/2022

SHEET
5 OF 13

MATCHLINE SHEET 4



MATCHLINE SHEET 4

PRELIMINARY PLANS

NOT FOR CONSTRUCTION

DATE

DISCLAIMER OF RESPONSIBILITY

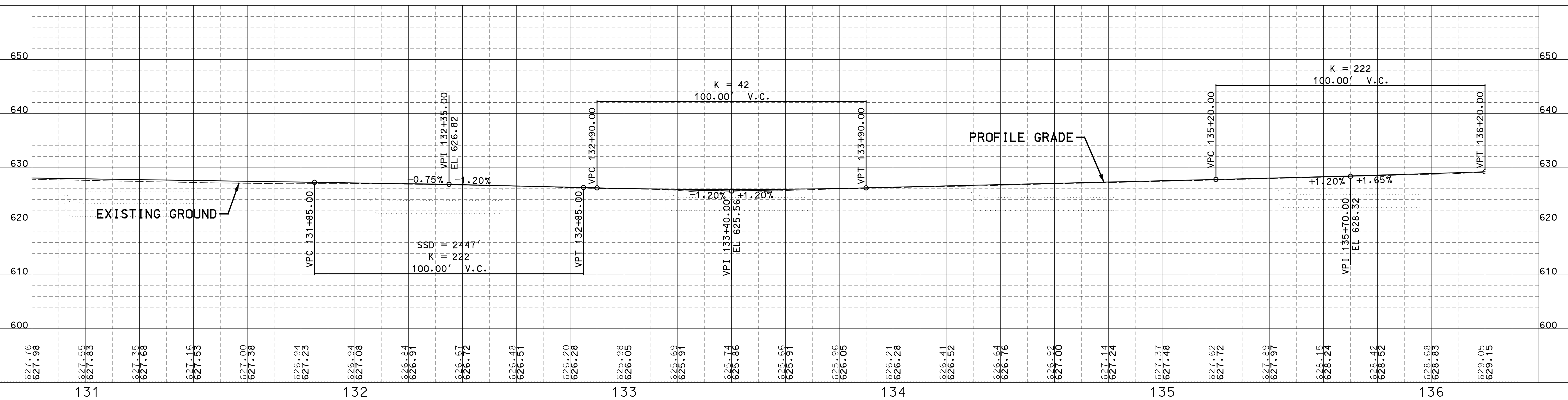
I hereby specify that the documents intended to be authorized by my seal are limited to this sheet, and I hereby disclaim any responsibility for all other drawings, specifications, estimates, reports or other documents or instruments relating to or intended to be used for any part of the engineering project or survey.

| REV | DATE | BY | DESCRIPTION |
|-----|------|----|-------------|
| | | | |
| | | | |
| | | | |
| | | | |
| | | | |
| | | | |
| | | | |
| | | | |
| | | | |
| | | | |

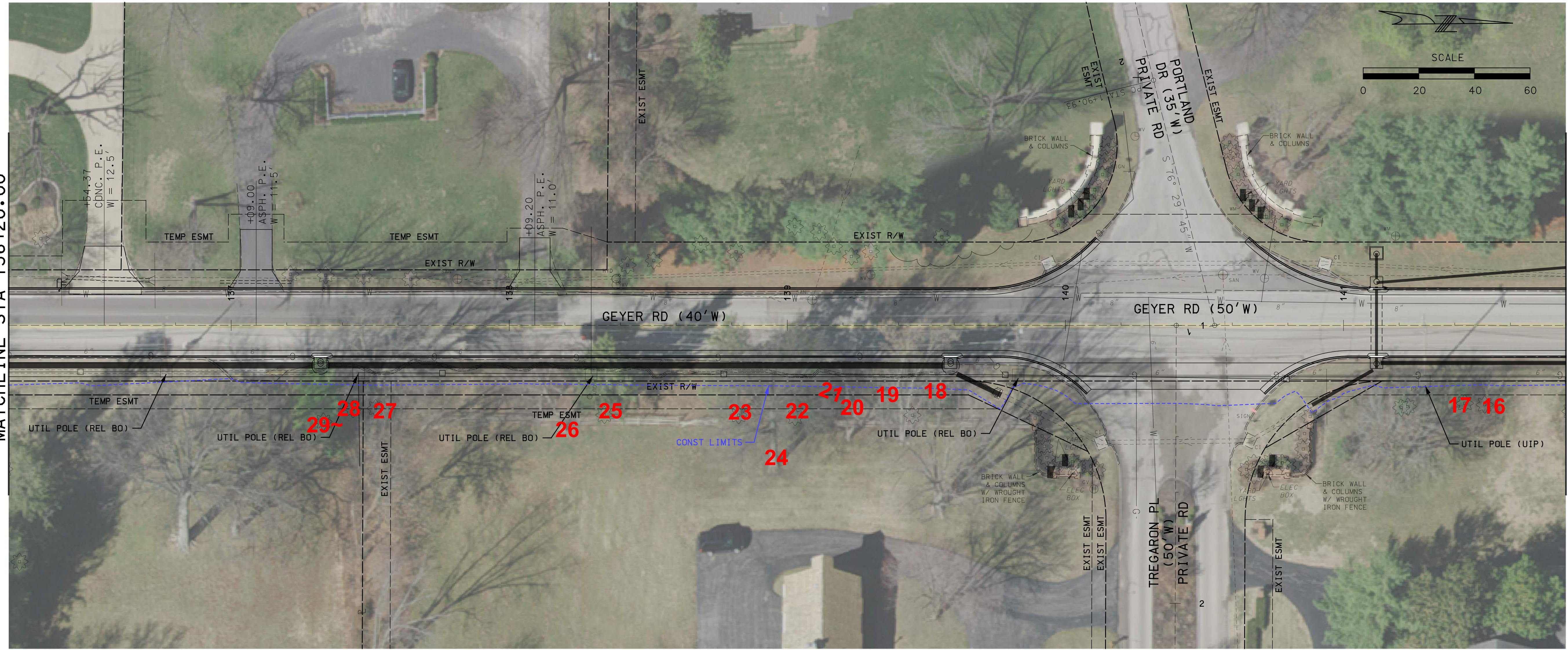
LOCHMUELLER GROUP
 411 N 10TH STREET, SUITE 200
 SAINT LOUIS, MISSOURI 63101
 P (314) 621-3395 F (314) 621-3288
 WWW.LOCHGROUP.COM
 MISSOURI STATE ENGINEERING CORPORATION
 CERTIFICATE/LICENSE NO. 2002011852

GEYER ROAD PHASE 2 IMPROVEMENTS
 PLAN AND PROFILE
 SHEET 3 OF 10

| |
|----------------------------------|
| PROJECT/JOB NO. STP-5503(608) |
| MSD PROJECT NO. - |
| MSD BASE MAP 20N, 21N, 22N |
| DATE PREPARED 2/14/2022 |
| SHEET 6 OF 13 |



MATCHLINE STA 136+20.00



MATCHLINE STA 141+80.00

PRELIMINARY PLANS

NOT FOR CONSTRUCTION

DATE

DISCLAIMER OF RESPONSIBILITY

I hereby specify that the documents intended to be authorized by my seal are limited to this sheet, and I hereby disclaim any responsibility for all other Drawings, Specifications, Estimates, Reports or other documents or instruments relating to or intended to be used for any part of the engineering project or survey.

| REV | DATE | BY | DESCRIPTION |
|-----|------|----|-------------|
| | | | |
| | | | |
| | | | |
| | | | |
| | | | |
| | | | |
| | | | |
| | | | |
| | | | |
| | | | |

LOCHMUELLER GROUP
 411 N 10TH STREET, SUITE 200
 SAINT LOUIS, MISSOURI 63101
 P (314) 621-3395 F (314) 621-3288
 WWW.LOCHGROUP.COM
 MISSOURI STATE ENGINEERING CORPORATION
 CERTIFICATE/LICENSE NO. 2002011852

GEYER ROAD PHASE 2 IMPROVEMENTS
PLAN AND PROFILE
SHEET 5 OF 10

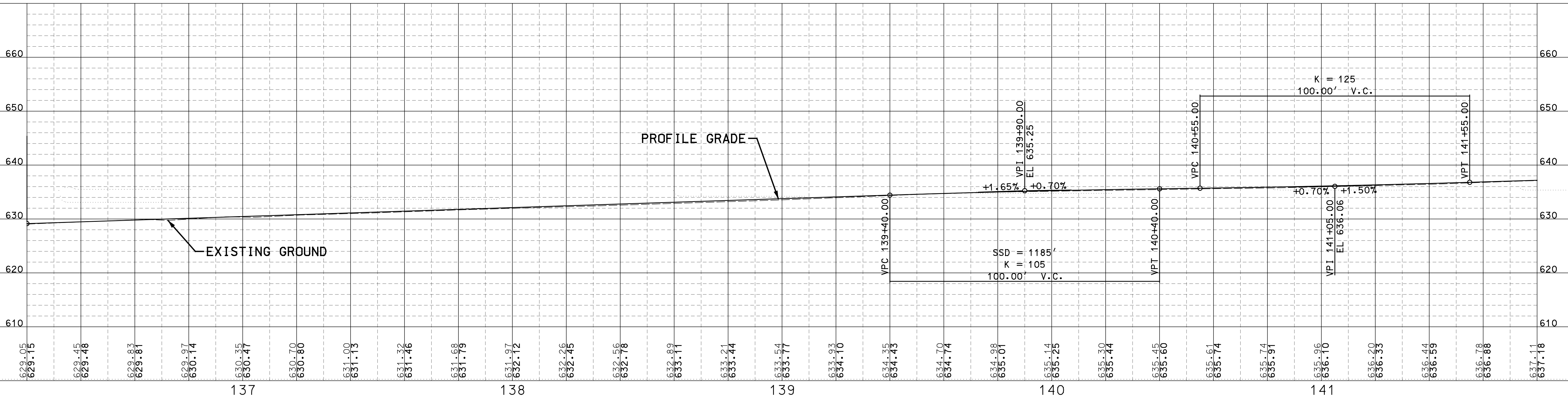
PROJECT/JOB NO.
STP-5503(608)

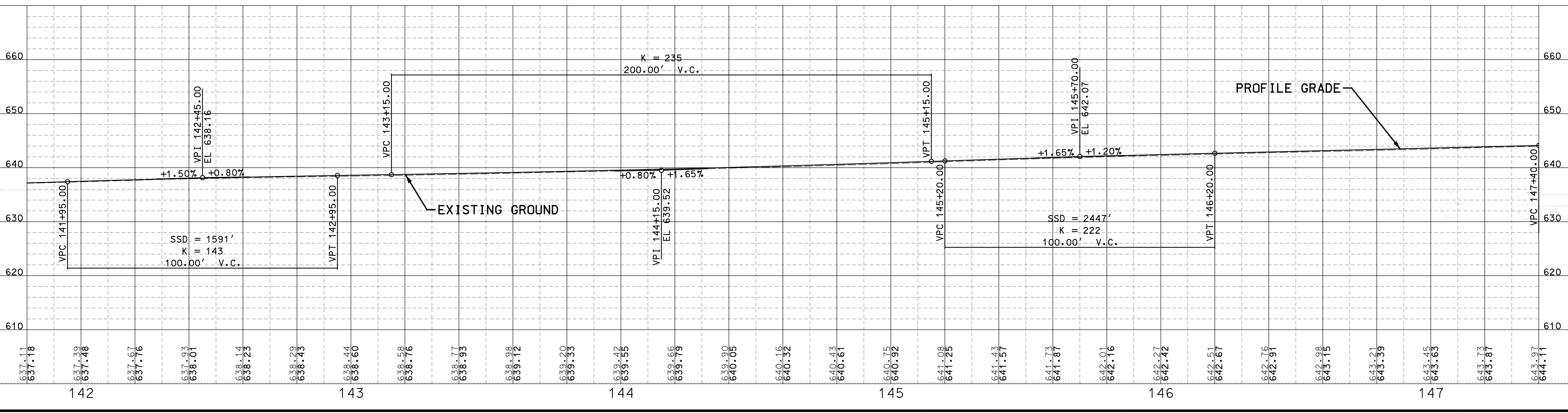
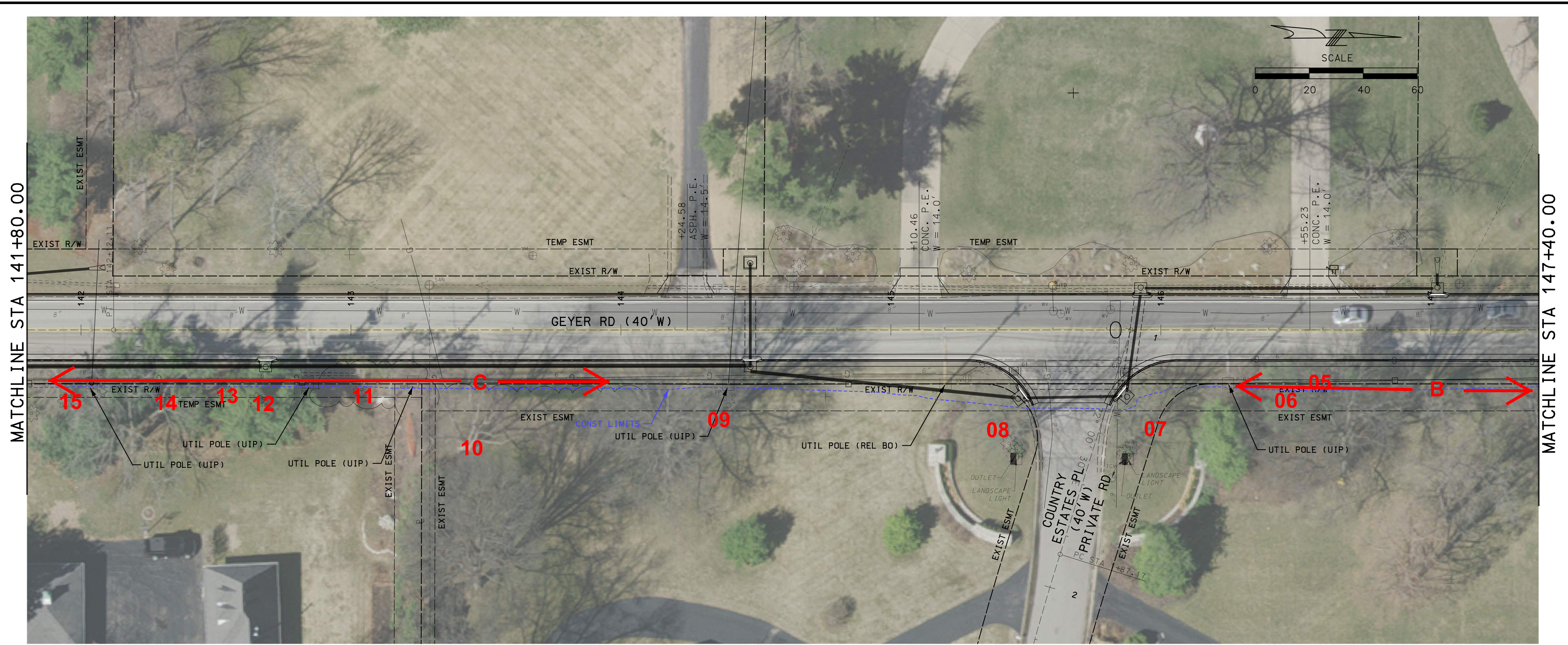
MSD PROJECT NO.
 -

MSD BASE MAP
20N,21N,22N

DATE PREPARED
2/14/2022

SHEET
8 OF 13





PRELIMINARY PLANS
 NOT FOR CONSTRUCTION
 DATE _____

DISCLAIMER OF RESPONSIBILITY
 I hereby specify that the documents intended to be authorized by my seal are limited to this sheet, and I hereby disclaim any responsibility for all other Drawings, Specifications, Estimates, Reports or other documents or instruments relating to or intended to be used for any part of the engineering project or survey.

| REV | DATE | BY | DESCRIPTION |
|-----|------|----|-------------|
| | | | |
| | | | |
| | | | |

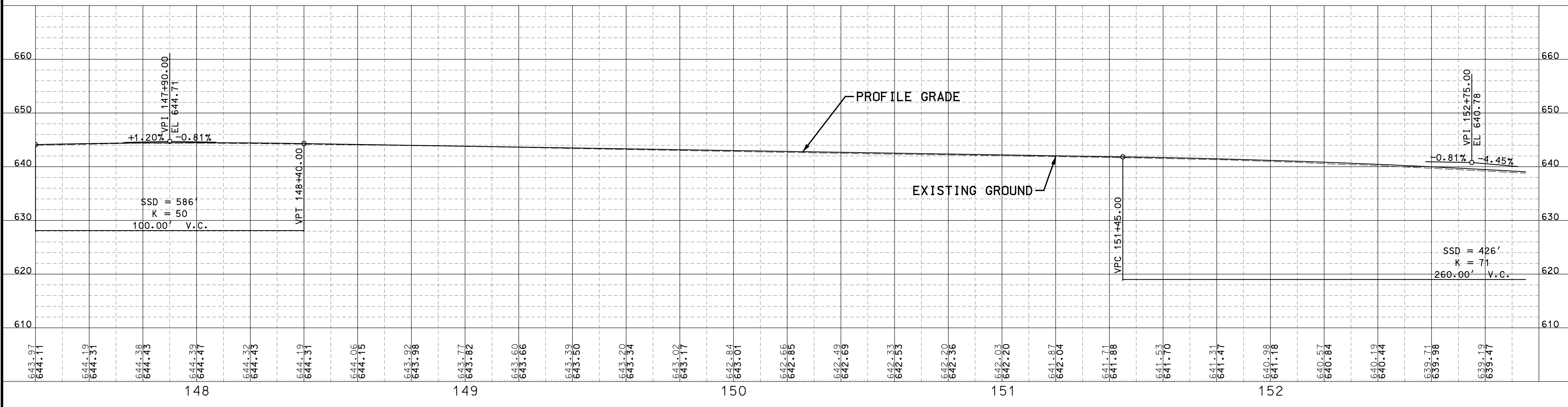
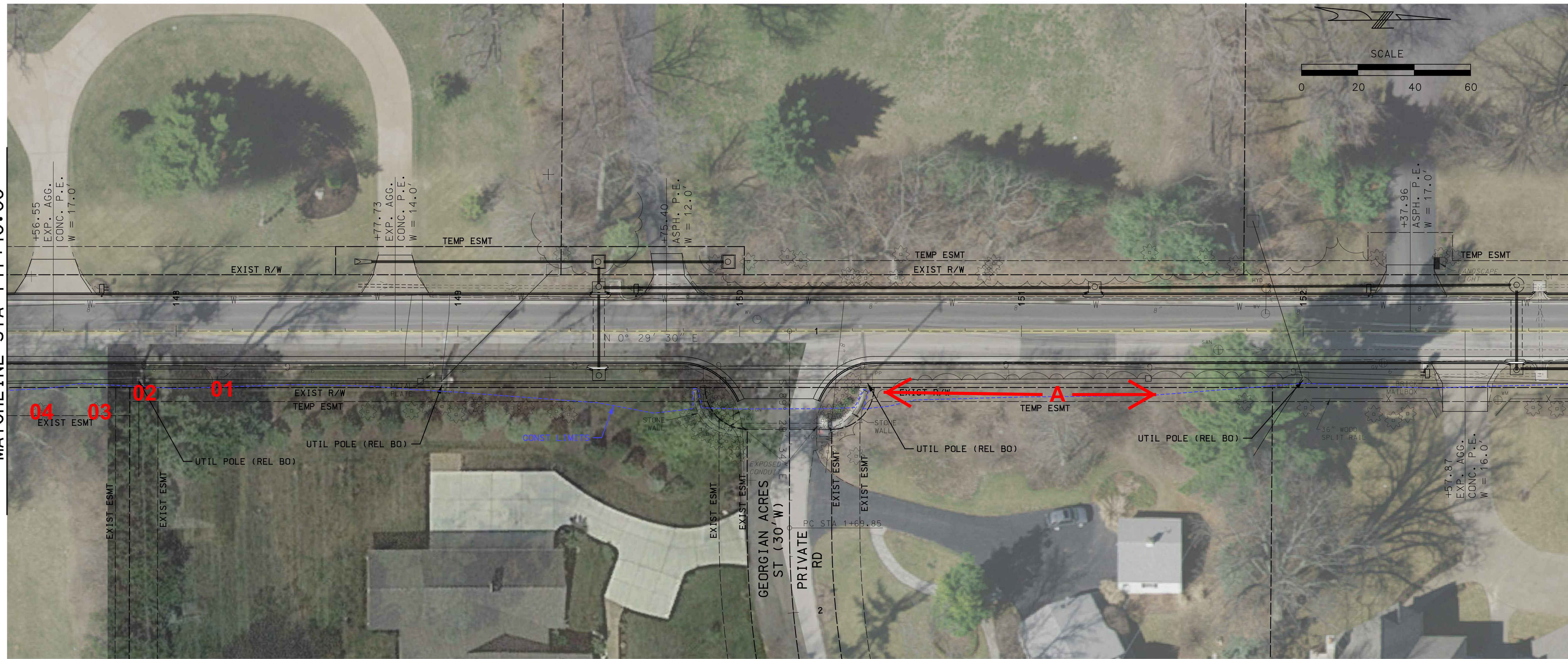
LOCHMUELLER GROUP
 411 N 10TH STREET, SUITE 200
 SAINT LOUIS, MISSOURI 63101
 P (314) 621-3395 F (314) 621-3288
 WWW.LOCHGROUP.COM
 MISSOURI STATE ENGINEERING CORPORATION
 CERTIFICATE/LICENSE NO. 2002011852

GEYER ROAD PHASE 2 IMPROVEMENTS
PLAN AND PROFILE
SHEET 6 OF 10

PROJECT/JOB NO.
STP-5503(608)
 MSD PROJECT NO.
 -
 MSD BASE MAP
20N, 21N, 22N
 DATE PREPARED
2/14/2022
 SHEET
9 OF 13

MATCHLINE STA 147+40.00

MATCHLINE STA 152+95.00



PRELIMINARY PLANS

NOT FOR CONSTRUCTION

DATE

DISCLAIMER OF RESPONSIBILITY

I hereby specify that the documents intended to be authorized by my seal are limited to this sheet, and I hereby disclaim any responsibility for all other Drawings, Specifications, Estimates, Reports or other documents or instruments relating to or intended to be used for any part of the engineering project or survey.

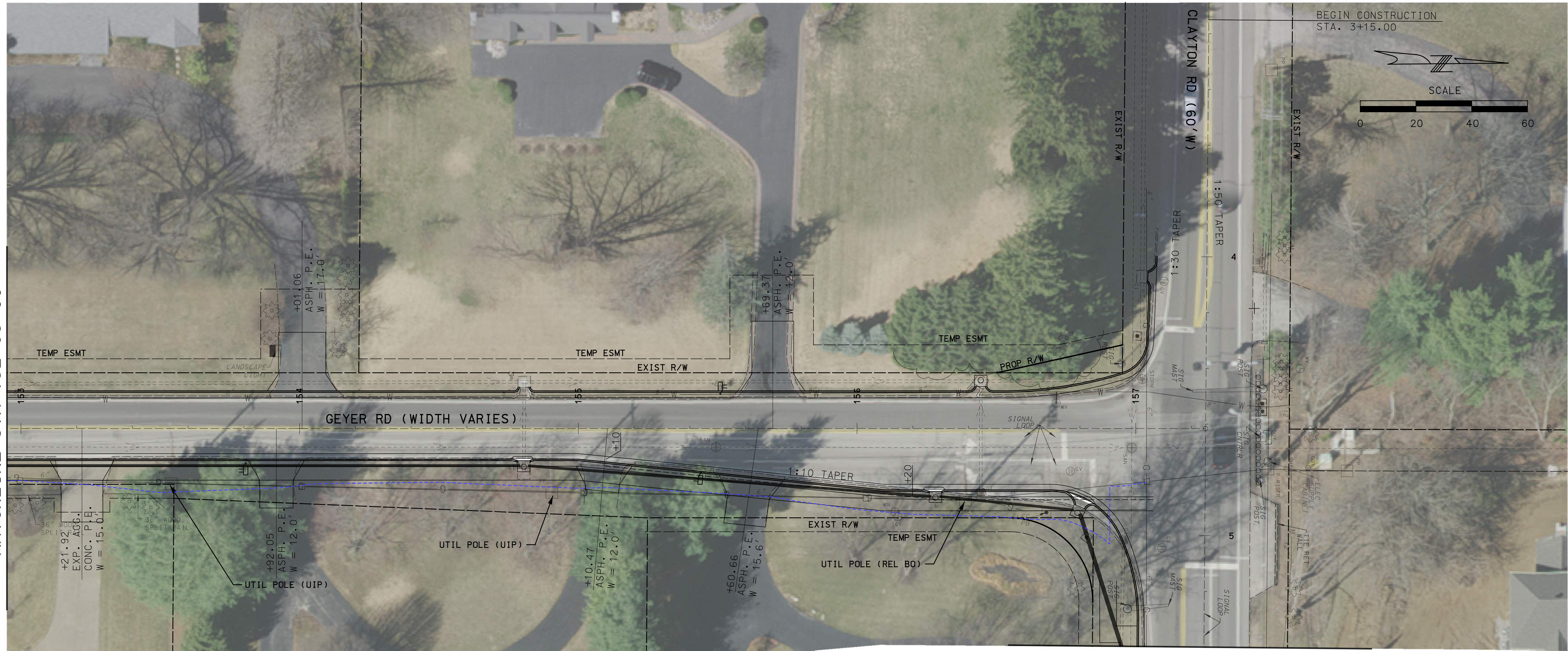
| REV | DATE | BY | DESCRIPTION |
|-----|------|----|-------------|
| | | | |
| | | | |
| | | | |
| | | | |

LOCHMUELLER GROUP
 411 N 10TH STREET, SUITE 200
 SAINT LOUIS, MISSOURI 63101
 P (314) 621-3395 F (314) 621-3288
 WWW.LOCHGROUP.COM
 MISSOURI STATE ENGINEERING CORPORATION
 CERTIFICATE/LICENCE NO. 2002011852

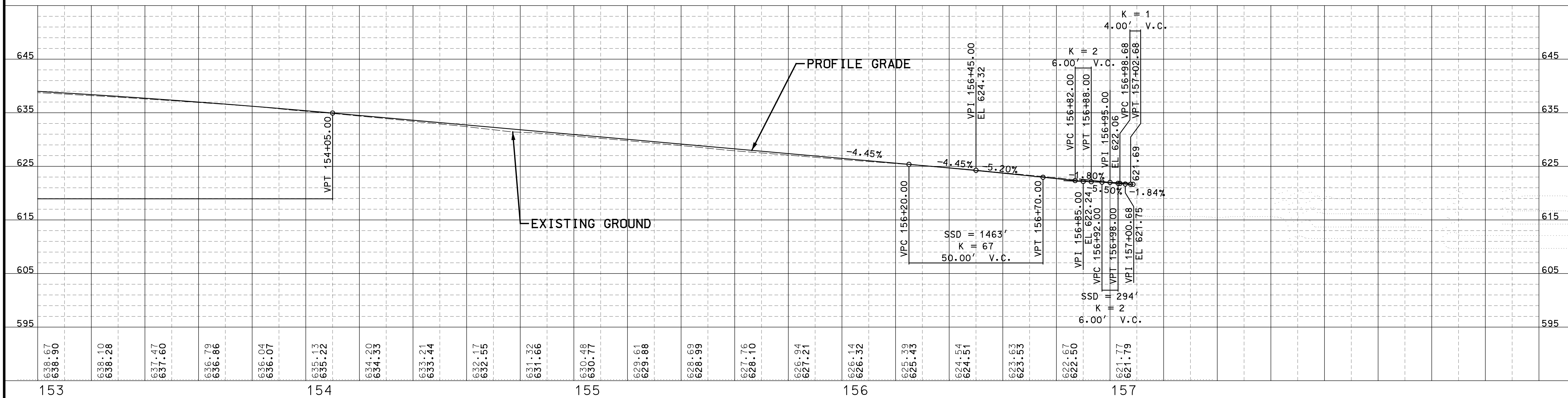
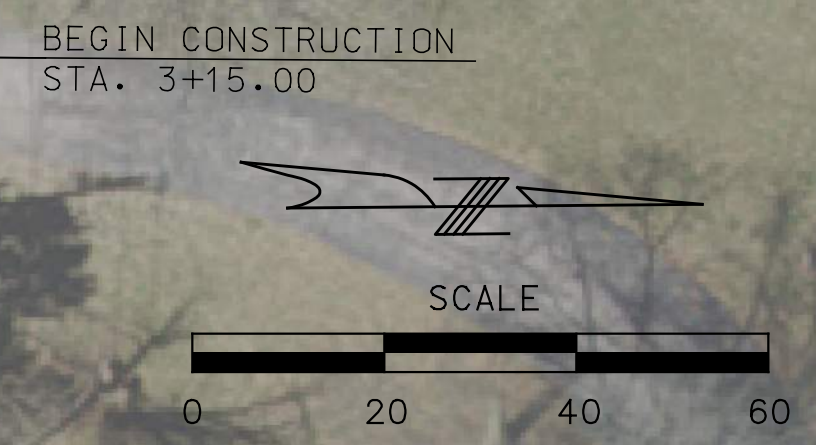
GEYER ROAD PHASE 2 IMPROVEMENTS
 PLAN AND PROFILE
 SHEET 7 OF 10

| |
|----------------------------------|
| PROJECT/JOB NO. STP-5503(608) |
| MSD PROJECT NO. - |
| MSD BASE MAP 20N, 21N, 22N |
| DATE PREPARED 2/14/2022 |
| SHEET 10 OF 13 |

MATCHLINE STA 152+95.00



MATCHLINE STA 5+40.00



PRELIMINARY PLANS
NOT FOR CONSTRUCTION
DATE

DISCLAIMER OF RESPONSIBILITY
I hereby specify that the documents intended to be authorized by my seal are limited to this sheet, and I hereby disclaim any responsibility for all other Drawings, Specifications, Estimates, Reports or other documents or instruments relating to or intended to be used for any part of the engineering project or survey.

| REV | DATE | BY | DESCRIPTION |
|-----|------|----|-------------|
| | | | |
| | | | |
| | | | |

LOCHMUELLER GROUP
411 N 10TH STREET, SUITE 200
SAINT LOUIS, MISSOURI 63101
P (314) 621-3395 F (314) 621-3288
WWW.LOCHGROUP.COM
MISSOURI STATE ENGINEERING CORPORATION
CERTIFICATE/LICENSE NO. 2002011852

GEYER ROAD PHASE 2 IMPROVEMENTS
PLAN AND PROFILE
SHEET 8 OF 10

PROJECT/JOB NO.
STP-5503(608)
MSD PROJECT NO.
-
MSD BASE MAP
20N, 21N, 22N
DATE PREPARED
2/14/2022
SHEET
11 OF 13